

**15/01718/FUL and 15/01718/LBC**  
**Bridge Street Car Park, Bridge Street,**  
**Staines-upon-Thames**

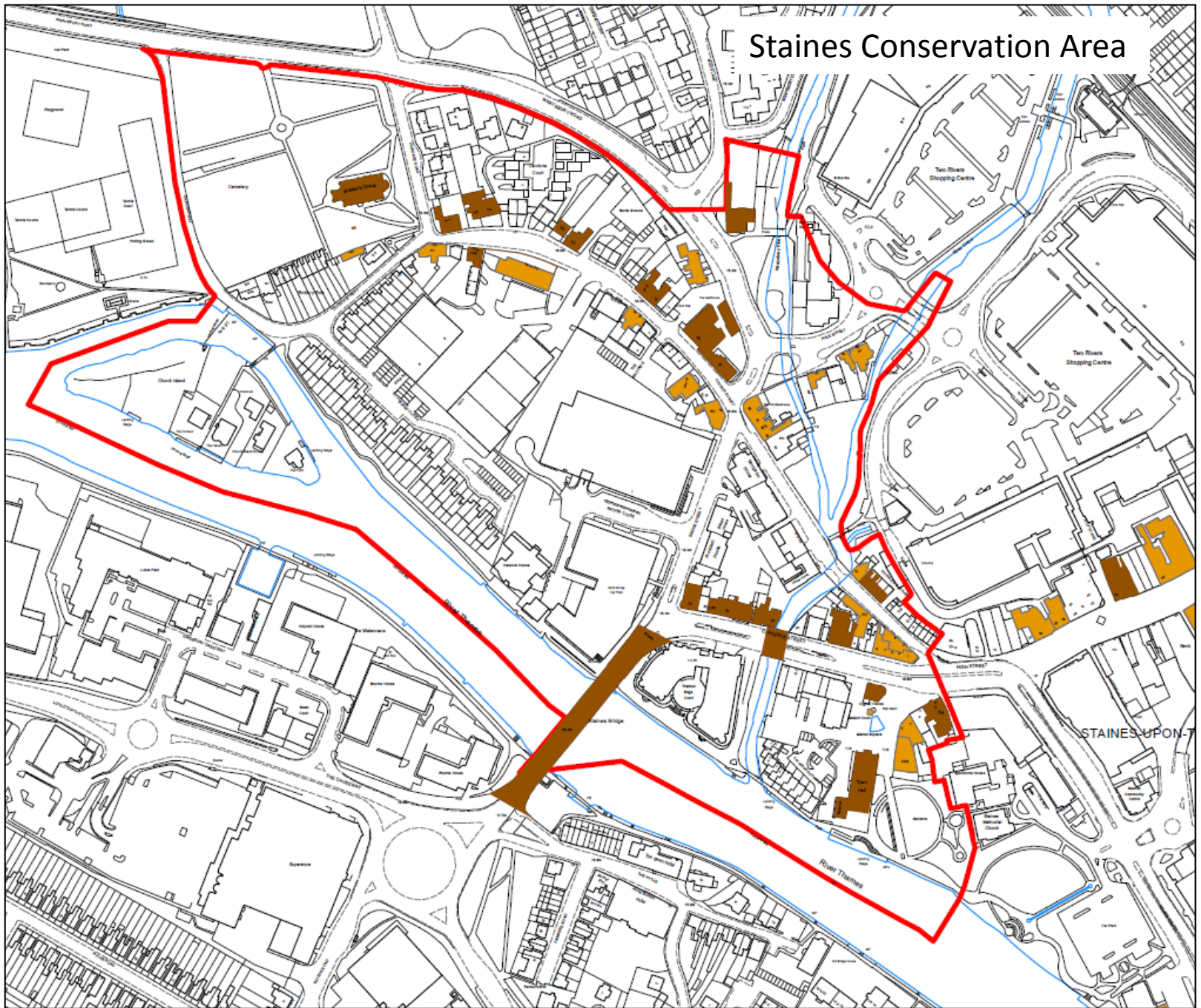
N  
 1:1,250

(c) Crown Copyright and database rights 2015 Ordnance Survey 100024284.





# Staines Conservation Area









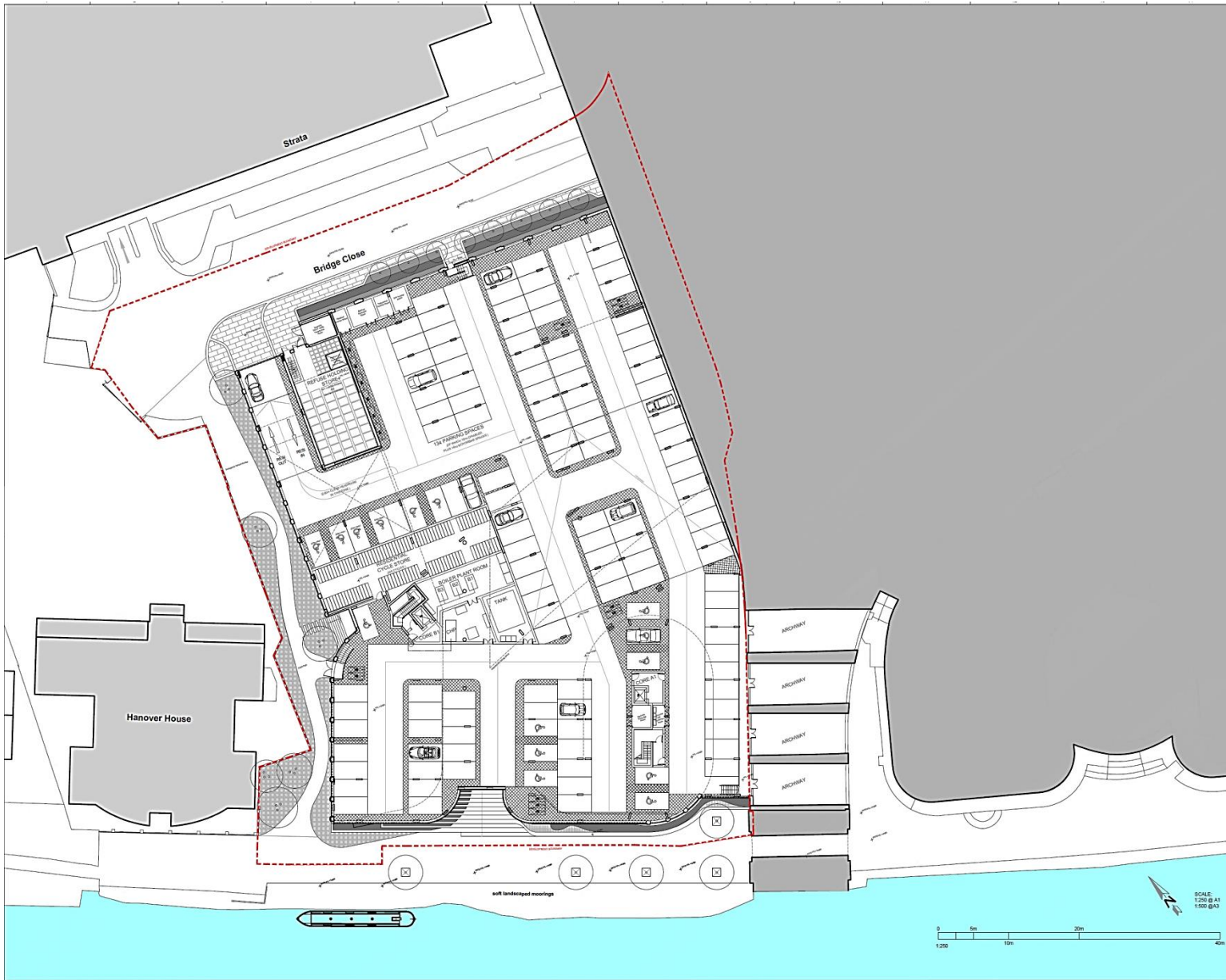












CLIENT  
 STRUCTURAL ENGINEER  
 SERVICES ENGINEER  
 CONSULTANT  
 KEY PLAN

NOTES:  
 THIS DRAWING IS PROTECTED BY COPYRIGHT.

P3 23.02.15 Depth of pavement beyond Bridge Street service bay extended to base of building to exceed 3m; adjacent landscape planter modified; and 2m trees moved to other Bridge Street locations to east. CY REB  
 P2 08.02.15 Pavement widened at corner of Bridge Street and Bridge Close; refuse holding store modified; SIF modification. CY REB

P1 18.12.15 Issued for Planning. CY REB

No.	Date	Comment	Drawn	Check

Issue Book  
**PRELIMINARY**  
**tp bennett**  
 architecture  
 interiors  
 planning  
 One America Street, London E61 0HS UK +44 (0) 20 7288 0200 www.tpbn.co.uk

Pages  
 Bridge Street  
 Staines-upon-Thames

Drawing Title  
 Lower Ground Floor  
 General Arrangement

Drawn	Date	Scale	Alt. Ref.
CY	18.12.2015	1:250 @ A1 1:500 @ A3	-

Project No.	Drawing Number	Rev.
A10875	D 0099	P3



1 Topographic Elevation - South  
1:100

2



2 Elevation - South  
1:100

CLIENT

STRUCTURAL ENGINEER

SERVICES ENGINEER

CONSULTANT

KEY PLAN

NOTES  
THIS DRAWING IS PROTECTED BY COPYRIGHT.

P2	12.02.18	Tower detail updated	CT	REB
A1	18.12.18	Revised facade drawings	AW	REB
No.	Date	Comment	Drawn	Check

Issue Date  
**PRELIMINARY**

Project  
**Bridge Street  
Staines-upon-Thames**

Drawing Title  
**Proposed South Elevation**

Client	Date	Scale @ A1	Alt. Ref.
JAC	18.11.2018	VARIES	--
Approved Project No.	Drawing Number	Rev.	
<b>A10875</b>	<b>D 0201</b>	<b>P2</b>	

©2018 JAC ARCHITECTS. ALL RIGHTS RESERVED. NO PART OF THIS DRAWING IS TO BE REPRODUCED OR TRANSMITTED IN ANY FORM OR BY ANY MEANS, ELECTRONIC OR MECHANICAL, WITHOUT PERMISSION IN WRITING FROM JAC ARCHITECTS.



1 Topographic Elevation - East  
1/20



2 Elevation - East  
1/20

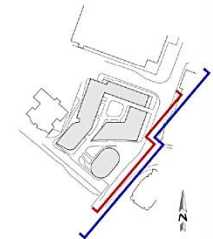
CLIENT

STRUCTURAL ENGINEER

SERVICES ENGINEER

CONSULTANT

KEY PLAN



NOTES:  
THIS DRAWING IS PROTECTED BY COPYRIGHT.

PP 12.03.18	Traverse Initial Revised	TS	RB/B
PP 18.02.19	Issued for Planning	MAF	RB/B
NL	Site Context	CP	DLB
Revised			

PRELIMINARY

**tp bennett**  
architecture  
interiors  
planning

One Avenue Blvd, London SE1 0NE UK +44 (0)20 7998 0000 www.tpbennett.com

Project  
Bridge Street  
Staines-upon-Thames

Drawing Title  
Proposed East Elevation

Drawn	Check	Scale	Alt Ref
JAC	15.11.2019	1/20	

© Bennett Projects	Drawing Number	Rev
A10875	D 0200	P2



1 Topographic Elevation - West  
1:300



2 Elevation - West  
1:300

CLIENT

STRUCTURAL ENGINEER

SERVICES ENGINEER

CONSULTANT

KEY PLAN

NOTES

THIS DRAWING IS PROTECTED BY COPYRIGHT.

P2	12.02.18	Tower Block Revised	AC	HEB
P1	18.12.18	Issue For Planning	MAK	HEB
Iss	Date	Comment	Drawn	Checked

Issue Date

**PRELIMINARY**

**tp bennett**

architecture  
interiors  
planning

One America Street, London SE1 0NE UK, +44 (0) 20 7298 8200 www.tpbennett.com

Project

Bridge Street  
Staines-upon-Thames

Drawing Title

Proposed West Elevation

Drawn	CHK	Scale	1:300	Ac. Ref.	
JAC	18.11.2016	VARIES			

tp bennett Project No.	Drawing Number	Rev.
A10875	D 0202	P2



1 Topographic Elevation - North  
1:50



2 Elevation - North  
1:20

CLIENT

STRUCTURAL ENGINEER

SERVICES ENGINEER

CONSULTANT

KEY PLAN

NOTES  
THIS DRAWING IS PROTECTED BY COPYRIGHT.

P2	13.03.16	Tower detail revised	CY	REB
P1	19.02.16	Revised Site Planning	AW	REB
No.	Disc	Comment	Drawn	Check

PRELIMINARY

**tp bennett**  
architecture  
interiors  
planning

One Abchurch Lane London EC4N 3DF UK +44 (0) 20 7300 2000 www.tpbennett.com

Project  
Bridge Street  
Staines-upon-Thames

Drawn Title  
Proposed North Elevation

Drawn	Check	Scale	Block	Alt	Rev
JAC	VARIES	1:5.11.2015	VARIES	-	-

tp bennett Project No. Drawing Number Rev

A10875 D 0203 P2

NEEDS AGENCY PROJECT ARCHITECTURE AND INTERIORS DESIGN SERVICES LIMITED



















































CLIENT				
STRUCTURAL ENGINEER				
SERVICES ENGINEER				
CONSULTANT				
KEY PLAN				
NOTES: THIS DRAWING IS PROTECTED BY COPYRIGHT.				
P3	29.02.16	Depth of pans to beaver inspected by 200mm; windows to beaver repositioned to stack through all floors; depth of pavement beyond Bridge Street service bay extended to face of building to avoid 20m adjacent landscape planter modified; and two trees moved to other Bridge Street locations to suit.	CTY	HSE
P2	08.02.16	Core CI operations and final repositioned to accommodate fire strategy; general updates to equipment schedule (as detailed) due to B10 coordination.	CTY	HSE
P1	18.12.15	Issued for Planning	CTY	HSE
No.	Date	Comment	Drawn	Check
Revised				
New State				
<b>PRELIMINARY</b>				
<b>tp bennett</b>				
architecture interiors planning				
One America Street, London SE1 9BE UK +44 (0) 20 7300 8000 <a href="http://www.tpbenett.com">www.tpbenett.com</a>				
Project				
Bridge Street Staines-upon-Thames				
Drawing title				
Level 01 General Arrangement				
Drawn	Check	Scale @ A1	Alt. Ref.	
CTY	J. 15.12.2015	1:200	11	
tp bennett Project No.		Drawing Number		Rev
A10875		D 0101		P3



CLIENT  
 STRUCTURAL ENGINEER  
 SERVICES ENGINEER  
 CONSULTANT  
 KEY PLAN

NOTES:  
 THIS DRAWING IS PROTECTED BY COPYRIGHT.

- P3 20.02.16: South of plan to be removed to 200mm windows to be replaced to stack through all floors, depth of pavement beyond Bridge Street service bay extended to take of building to exceed 2m; pavement landscape planer modified, and two trees moved to other Bridge Street locations to suit. CY HSB
- P2 08.02.16: Core C1 replaced and then repositioned to accommodate fire strategy, general updates to equipment schedule (as included) due to B17 coordination. CY HSB
- P1 16.12.15: Revised for Planning. CY HSB

New Date  
**PRELIMINARY**  
**tp bennett**  
 architecture  
 interiors  
 planning  
 One America Road, London SE1 0NE UK +44 (0) 20 7298 0000 www.tpbennett.com

Project  
**Bridge Street  
 Staines-upon-Thames**

Drawing Title  
**Level 02  
 General Arrangement**

Drawn	Date	Scale	Sheet	File
CY	16.12.2015	1:200	A1	P3
tp bennett Project No.		Drawing Number		Rev
A10875		D 0102		P3



CLIENT																				
STRUCTURAL ENGINEER																				
SERVICES ENGINEER																				
CONSULTANT																				
KEY PLAN																				
NOTES: THIS DRAWING IS PROTECTED BY COPYRIGHT.																				
<table border="1"> <tr><td>FP3</td><td>24.02.16</td><td>Depth of plans to lower deepened by 300mm windows to lower repositioned to stack through all floors depth of placement beyond Bridge Street service bay extended to base of building to access 2nd adjacent bridge greater modified, and two items moved to other Bridge Street locations to suit</td><td>CY</td><td>REV</td></tr> <tr><td>FP2</td><td>04.02.16</td><td>Core/CT exercise and now repositioned to accommodate the strategy, general updates to apartment layouts has allowed due to DVP coordination</td><td>CY</td><td>REV</td></tr> <tr><td>FP1</td><td>18.12.15</td><td>Issued for Planning</td><td>CY</td><td>REV</td></tr> <tr><td>No. 1</td><td>Date</td><td>Comment</td><td>Drawn</td><td>Check</td></tr> </table>	FP3	24.02.16	Depth of plans to lower deepened by 300mm windows to lower repositioned to stack through all floors depth of placement beyond Bridge Street service bay extended to base of building to access 2nd adjacent bridge greater modified, and two items moved to other Bridge Street locations to suit	CY	REV	FP2	04.02.16	Core/CT exercise and now repositioned to accommodate the strategy, general updates to apartment layouts has allowed due to DVP coordination	CY	REV	FP1	18.12.15	Issued for Planning	CY	REV	No. 1	Date	Comment	Drawn	Check
FP3	24.02.16	Depth of plans to lower deepened by 300mm windows to lower repositioned to stack through all floors depth of placement beyond Bridge Street service bay extended to base of building to access 2nd adjacent bridge greater modified, and two items moved to other Bridge Street locations to suit	CY	REV																
FP2	04.02.16	Core/CT exercise and now repositioned to accommodate the strategy, general updates to apartment layouts has allowed due to DVP coordination	CY	REV																
FP1	18.12.15	Issued for Planning	CY	REV																
No. 1	Date	Comment	Drawn	Check																
<p style="text-align: right;">Issue Date</p> <p style="text-align: center;"><b>PRELIMINARY</b></p> <p style="text-align: center;"><b>tp bennett</b> architecture interiors planning</p> <p style="text-align: center;"><small>One Abchurch Lane, London EC4N 3DF UK, +44 (0)20 7300 5000 www.tpbennett.com</small></p> <p>Project Bridge Street Staines-upon-Thames</p> <p>Drawing Title Level 03 General Arrangement</p> <table border="1"> <tr><td>Drawn</td><td>Date</td><td>Scale</td><td>Alt. No.</td></tr> <tr><td>CY</td><td>10.12.2015</td><td>1:250</td><td>-</td></tr> </table> <table border="1"> <tr><td>tp bennett Project No.</td><td>Drawing Number</td><td>Rev.</td></tr> <tr><td>A10875</td><td>D 0103</td><td>P3</td></tr> </table>	Drawn	Date	Scale	Alt. No.	CY	10.12.2015	1:250	-	tp bennett Project No.	Drawing Number	Rev.	A10875	D 0103	P3						
Drawn	Date	Scale	Alt. No.																	
CY	10.12.2015	1:250	-																	
tp bennett Project No.	Drawing Number	Rev.																		
A10875	D 0103	P3																		



CLIENT  
 STRUCTURAL ENGINEER  
 SERVICES ENGINEER  
 CONSULTANT

KEY PLAN

NOTES:  
 THIS DRAWING IS PROTECTED BY COPYRIGHT.

P3	23.02.15	Depth of parts to lower designated by 200mm windows to lower repositioned to stack through all floors depth of general service Bridge Street service bay extended to face of building to avoid 200 adjacent package planter received, and this item moved to other Bridge Street locations to suit.	CY	RES
P2	03.02.15	Core C1 staircase and riser repositioned to accommodate fire strategy, general updates to apartment layout and elevated due to DVP coordination.	CY	RES
P1	18.12.14	Issued for planning.	CY	RES
	No.	Date	Comment	Drawn / Check

Issue Status  
**PRELIMINARY**

**tp bennett**  
 architecture  
 interiors  
 planning

One Abchurch Lane, London, EC4N 3DF, UK, +44 (0) 20 7306 8300 [www.tpbenett.com](http://www.tpbenett.com)

Project  
 Bridge Street  
 Staines-upon-Thames

Drawing Title  
 Level 04  
 General Arrangement

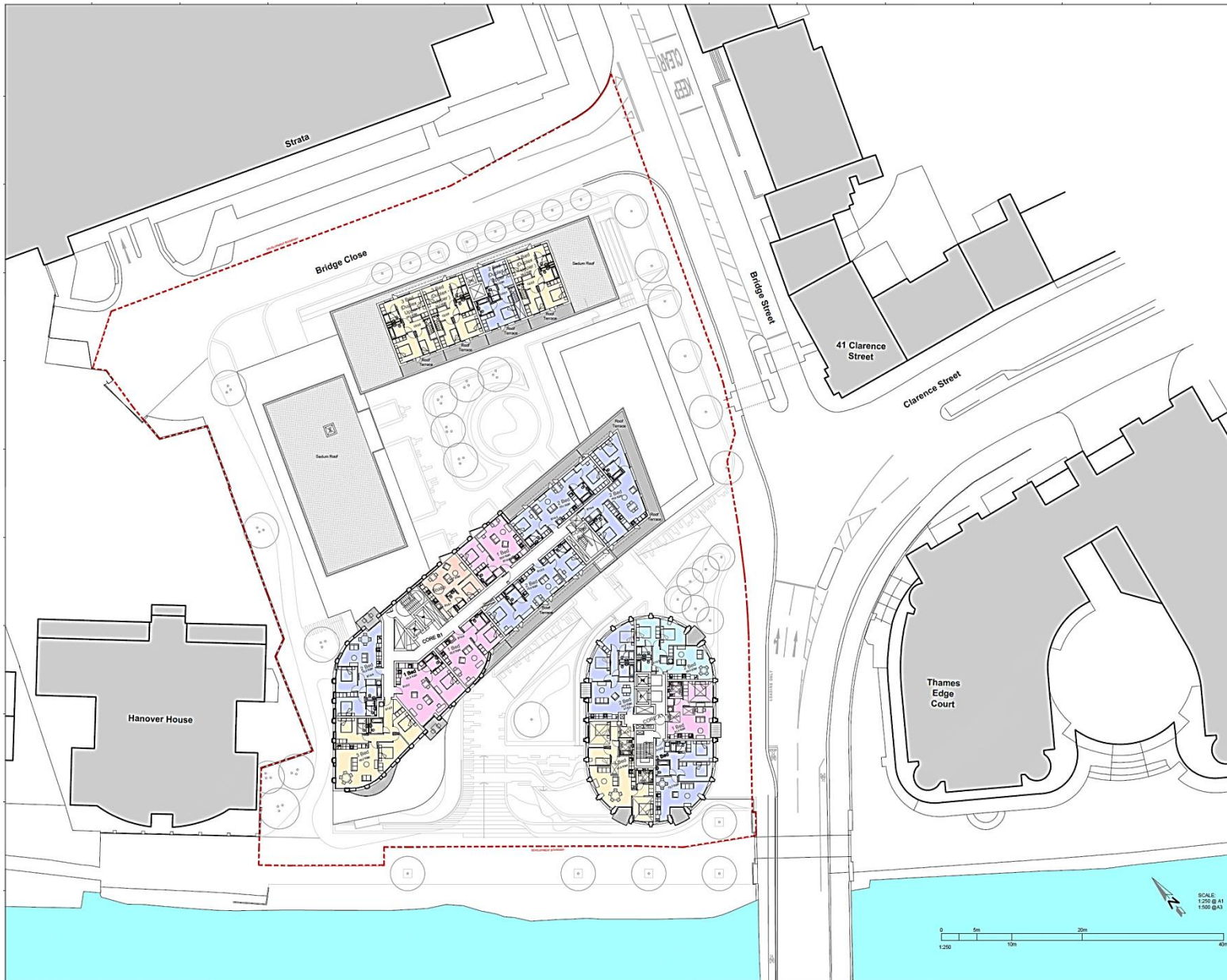
Drawn	Check	Drawn @ A1	Alt. No.
CY	15.12.2015	2/55	

to be used Project No.	Drawing Number	Rev.
A10875	D 0104	P3





CLIENT													
STRUCTURAL ENGINEER													
SERVICES ENGINEER													
CONSULTANT													
KEY PLAN													
NOTES: THIS DRAWING IS PROTECTED BY COPYRIGHT.													
<p>P3 25/02/16: South of part to be lower associated by 200mm windows to be repositioned to stack through all floors, depth of pavement around Bridge Street service bay enhanced to face of building to avoid 2m3 adjacent landscape planter modified and trees moved to other Bridge Street locations to suit</p> <p>P2 08/02/16: Core CI to be replaced and new repositioned to accommodate fire strategy, general updates to equipment schedule (see included due to DVT coordination)</p>													
<table border="1"> <tr> <th>No.</th> <th>Date</th> <th>Comment</th> <th>Drawn</th> <th>Checked</th> </tr> <tr> <td>P1</td> <td>18.12.15</td> <td>Issued for Planning</td> <td></td> <td></td> </tr> </table>				No.	Date	Comment	Drawn	Checked	P1	18.12.15	Issued for Planning		
No.	Date	Comment	Drawn	Checked									
P1	18.12.15	Issued for Planning											
<p>New Date</p> <p><b>PRELIMINARY</b></p> <p><b>tp bennett</b></p> <p>architecture interiors planning</p> <p>One America Street, London SE1 0HE UK +44 (0) 20 7298 8000 www.tpbennett.com</p>													
<p>Project Bridge Street Staines-upon-Thames</p>													
<p>Drawing Title Level 05 General Arrangement</p>													
<p>Scale: 1:250 @ A1 1:500 @ A3</p>													
<p>0 5m 10m 20m 40m</p>													
<table border="1"> <tr> <th>Drawn</th> <th>Date</th> <th>Scale</th> <th>@</th> <th>A1 Ref.</th> </tr> <tr> <td>CY</td> <td>15.12.2015</td> <td>1:250</td> <td></td> <td></td> </tr> </table>				Drawn	Date	Scale	@	A1 Ref.	CY	15.12.2015	1:250		
Drawn	Date	Scale	@	A1 Ref.									
CY	15.12.2015	1:250											
<table border="1"> <tr> <th>tp bennett Project No.</th> <th>Drawing Number</th> <th>Rev</th> </tr> <tr> <td>A10875</td> <td>D 0105</td> <td>P3</td> </tr> </table>		tp bennett Project No.	Drawing Number	Rev	A10875	D 0105	P3						
tp bennett Project No.	Drawing Number	Rev											
A10875	D 0105	P3											



CLIENT

STRUCTURAL ENGINEER

SERVICES ENGINEER

CONSULTANT

KEY PLAN

NOTES:  
THIS DRAWING IS PROTECTED BY COPYRIGHT.

P3 23.02.16 Depth of piers to lower deepened by 200mm. CY REB  
anchors to lower repositioned to stack through  
all floors, depth of pavement beyond Bridge Street  
service bay extended to base of building to encase  
this adjacent kerbside planter modified, and top  
steps moved to other Bridge Street locations to suit.

P2 04.02.16 General updates to apartment layouts CY REB  
P1 14.12.15 issued for Planning CY REB  
% Date Comment Clean Check  
Revisions

Issue Status  
**PRELIMINARY**

**tp bennett**  
architecture  
interiors  
planning

One America Street, London SE1 9HG, UK, +44 (0) 20 7330 2000 www.tpbennett.com

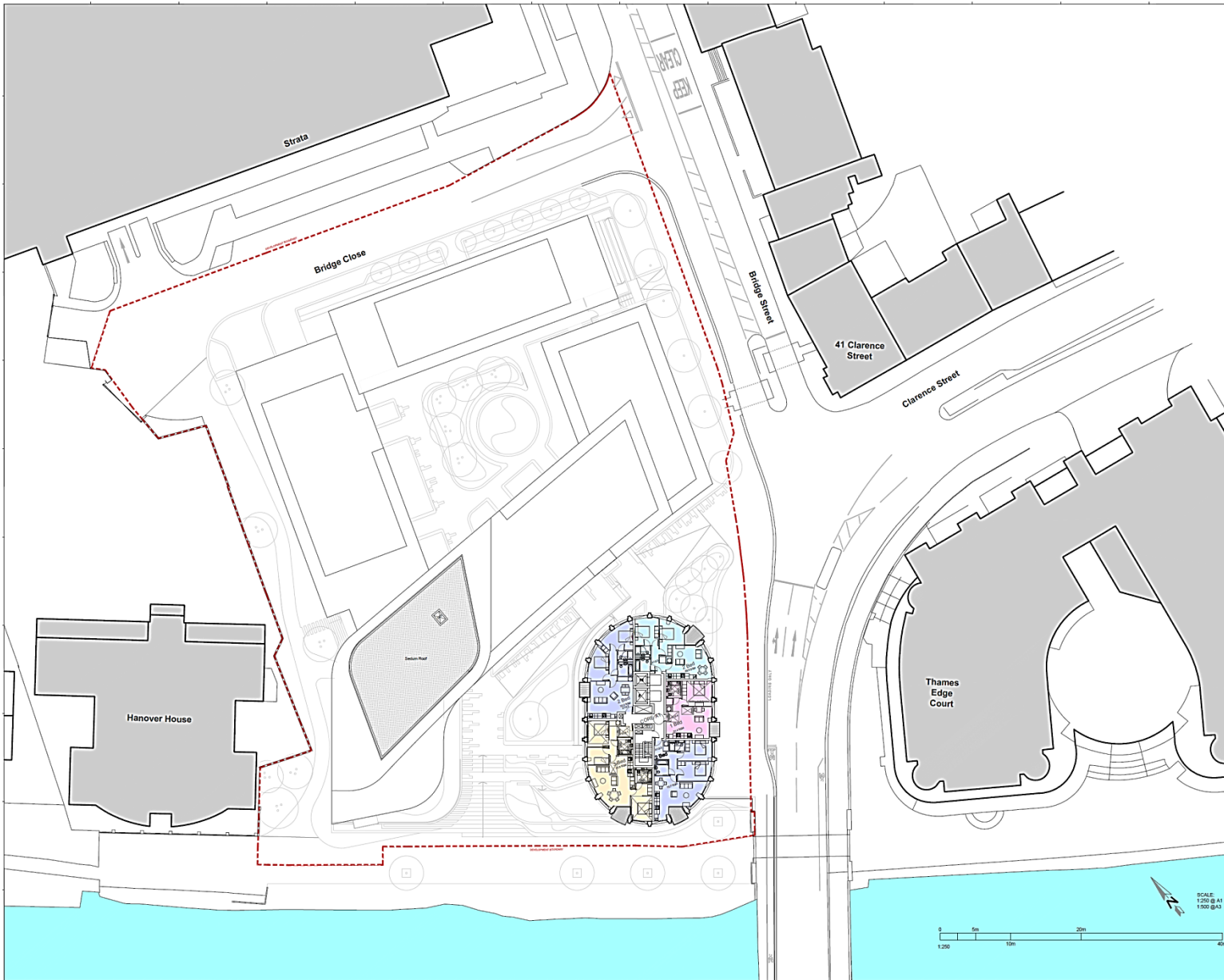
Project  
Bridge Street  
Staines-upon-Thames

Drawing Title  
Level 06  
General Arrangement

Drawn Date Scale & A1 AL, Inc.  
CY 10.12.2015 1:200 @ A1 1:500 @ A1

Revised Project No. Drawing Number Rev  
A10875 D 0106 P3





CLIENT  
 STRUCTURAL ENGINEER  
 SERVICES ENGINEER  
 CONSULTANT  
 KEY PLAN

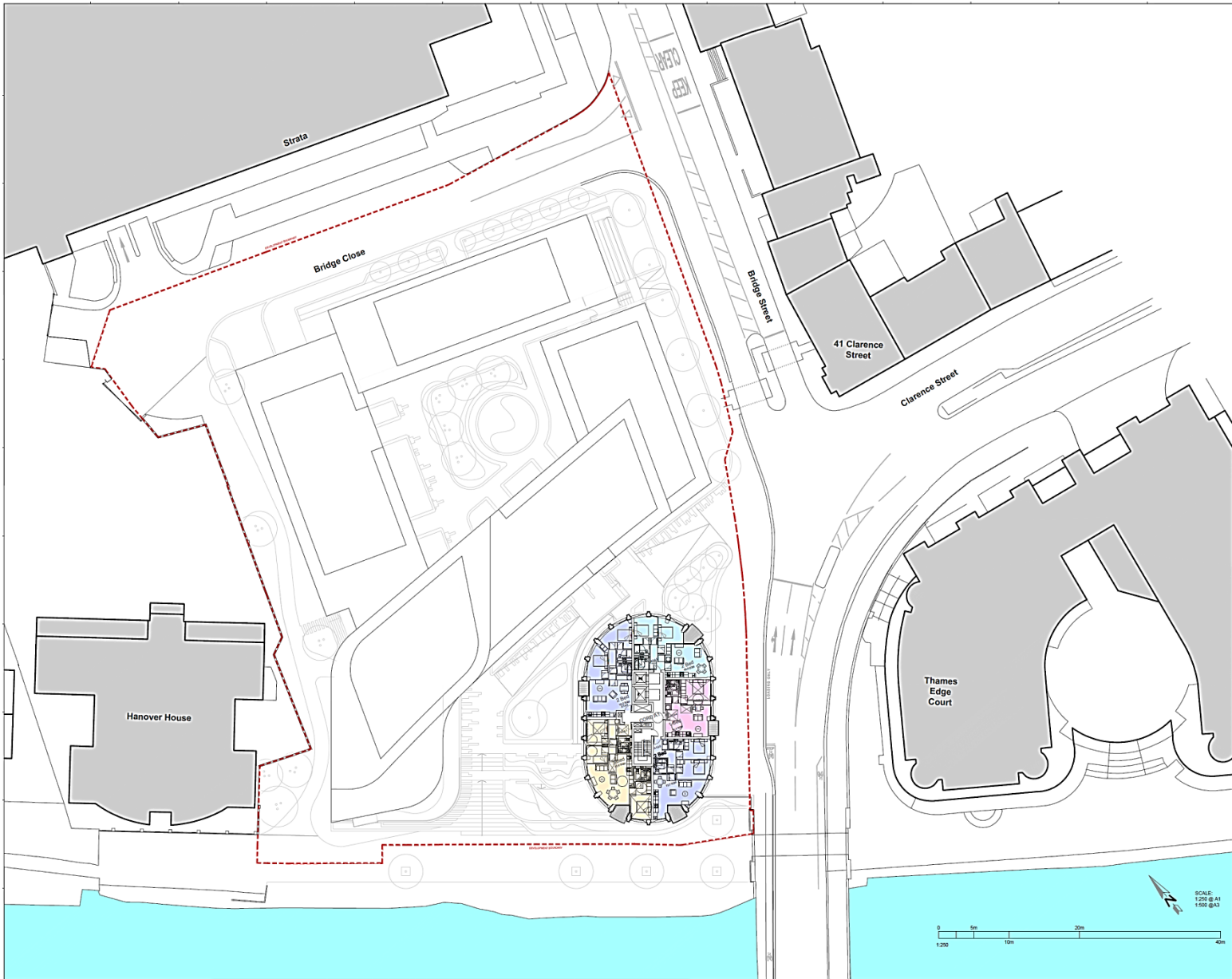
NOTES:  
 THIS DRAWING IS PROTECTED BY COPYRIGHT.

P3 29.02.16 Depth of piers to lower deepened by 200mm; sections to lower repositioned to show through all floors; depth of pavement beyond Bridge Street service top adjacent to line of railing to be revised (m); adjacent landscape planter modified; and 3no trees removed to clear Bridge Street footway to rail.  
 P2 08.02.16 General updates to apartment layouts (as discussed due to B17M consultation).  
 P1 18.12.15 Issued for Planning.  
 No. Date Comment Drawn Check

Issue Date  
**PRELIMINARY**  
**tp bennett**  
 architecture  
 interiors  
 planning  
 One Abchurch Lane, London EC4N 3NE, UK +44 (0) 20 7300 2000 www.tpbbennett.com

Project  
 Bridge Street  
 Staines-upon-Thames  
 Drawing Title  
 Level 08  
 General Arrangement  
 Drawn Date Scale @ A1 A3 Ref.  
 CV 10.12.2015 1:250 1  
 Checked/Author  
 A10875 D 0108 P3

ADDITIONAL PLANNING PERMISSIONS MAY BE REQUIRED IF STRUCTURAL OR CONSTRUCTIONAL WORK IS NOT THE SUBJECT MATTER



CLIENT  
 STRUCTURAL ENGINEER  
 SERVICES ENGINEER  
 CONSULTANT  
 KEY PLAN

NOTES:  
 THIS DRAWING IS PROTECTED BY COPYRIGHT.

P3 29.02.16 Depth of pits to lower deepened by 200mm, concrete to lower re-entrant for slab through all floors, depth of pavement beyond Bridge Street revised lay selected by face of building the exceed this adjacent landscape planter modified, and also these moved to other Bridge Street locations to suit.  
 P2 08.02.16 General updates to apartment layouts (as enclosed) due to DVP construction.  
 P1 18.12.15 Issued for Planning

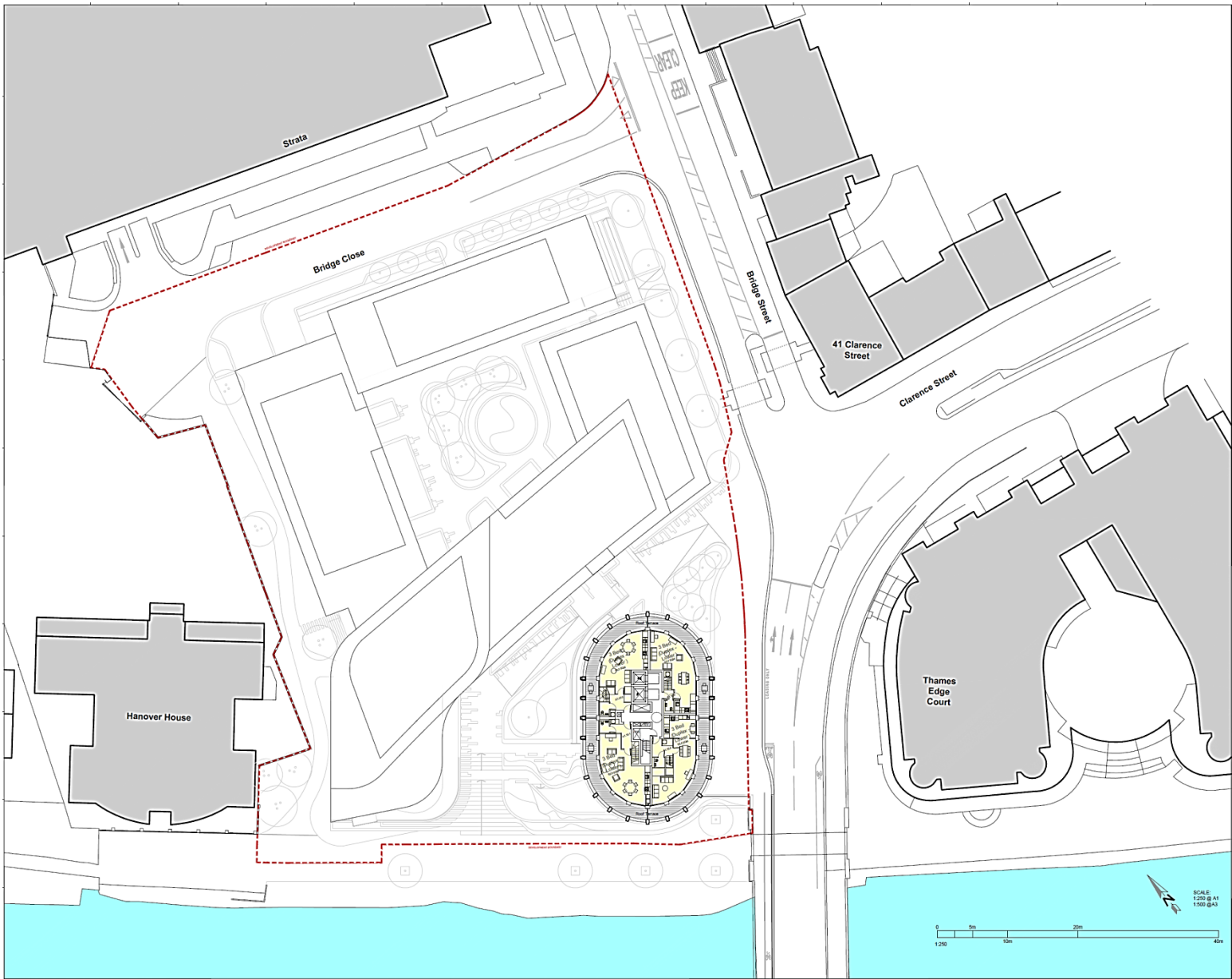
Issue Date  
**PRELIMINARY**  
**tp bennett**  
 architecture  
 interiors  
 planning  
 One Avenue Street, London E15 9EJ UK +44 (0) 20 7586 8900 www.tpbennett.com

Project  
 Bridge Street  
 Staines-upon-Thames  
 Drawing Title  
 Level 09  
 General Arrangement

Drawn	Date	Scale @ A1	Alt Ref
CB	18.12.2015	1:250	
Checked	Date	Scale @ A1	Alt Ref
CB	18.12.2015	1:250	

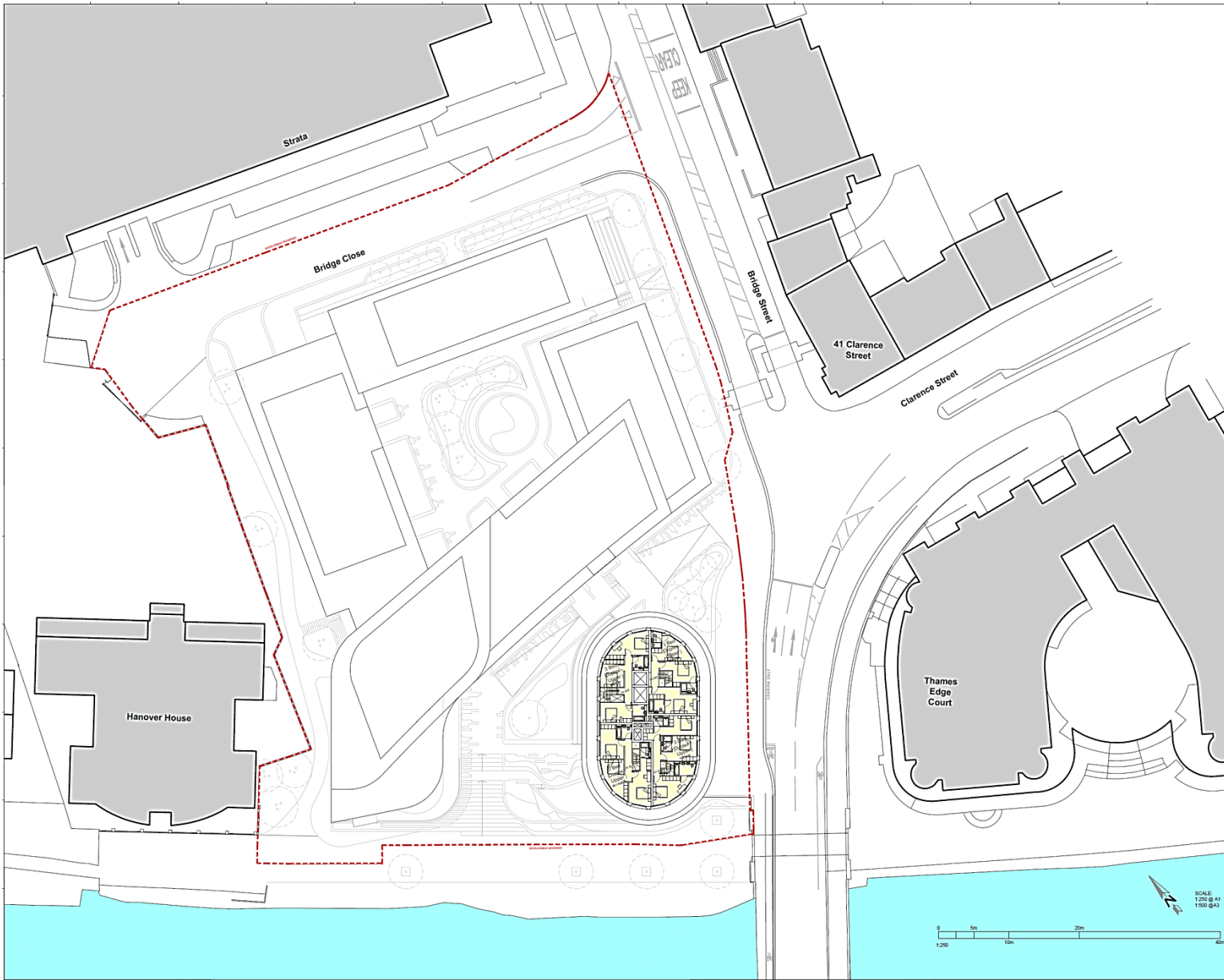
Drawing Number  
 A10875 D 0109 P3

ALL RIGHTS RESERVED. NO PART OF THIS DRAWING IS TO BE REPRODUCED OR TRANSMITTED IN ANY FORM OR BY ANY MEANS, ELECTRONIC OR MECHANICAL, INCLUDING PHOTOCOPYING, RECORDING, OR BY ANY INFORMATION STORAGE AND RETRIEVAL SYSTEM.



CLIENT			
STRUCTURAL ENGINEER			
SERVICES ENGINEER			
CONSULTANT			
KEY PLAN			
NOTES: THIS DRAWING IS PROTECTED BY COPYRIGHT.			
<p>P3 28.02.15 Depth of piers to beaver deepened by 200mm; CY REB anchors to beaver replaced to take through all floors, depth of pavement beyond Bridge Street served by extended to base of existing in excess 3m; adjacent landscape planter modified; and fire rises moved to other Bridge Street locations to suit.</p> <p>P2 08.02.15 General updates to apartment layouts; CY REB see schedule, due to RFP coordination.</p> <p>P1 18.12.15 Issued for Planning; CY REB</p>			
No.	Date	Comment	Drawn / Check
<p>Revision</p> <p>Issue Date</p> <p><b>PRELIMINARY</b></p> <p><b>tp bennett</b> architecture interiors planning</p> <p>One Avenue Street, London SE1 2ND UK +44 (0) 20 7266 2000 www.tpbn.net/usa</p> <p>Project Bridge Street Staines-upon-Thames</p> <p>Drawing Title Level 10 General Arrangement</p> <p>Drawn Date Scale @ A1 A3 Ref. C 18.12.2015 1:250 1:250</p> <p>© Issued / Project No. Drawing Number Rev. A10875 D 0110 P3</p>			

ARCHITECT: TP BENNETT ARCHITECTURE INTERIORS PLANNING  
PROJECT: BRIDGE STREET STAINES-UPON-THAMES  
DRAWING: LEVEL 10 GENERAL ARRANGEMENT  
DATE: 18.12.2015



CLIENT

STRUCTURAL ENGINEER

SERVICES ENGINEER

CONSULTANT

KEY PLAN

NOTES:  
THIS DRAWING IS PROTECTED BY COPYRIGHT.

P3 26.02.16 Depth of park to lower (maximum by 200mm) windows to lower (maximum by 200mm) all floors, depth of pavement beyond Bridge Street service bay extended to base of building, the excess 200mm adjacent landscape garden modified, and trees moved to other Bridge Street locations to suit. CY RSE

P2 08.02.16 RCP Coordinator CY RSE  
P1 18.12.15 Issue for Planning CY RSE

No.	Date	Comment	By	Check

Revision

tp bennett  
architecture  
interiors  
planning

One America Street, London SE1 0NS UK +44 (0) 20 7298 2000 www.tpbennett.com

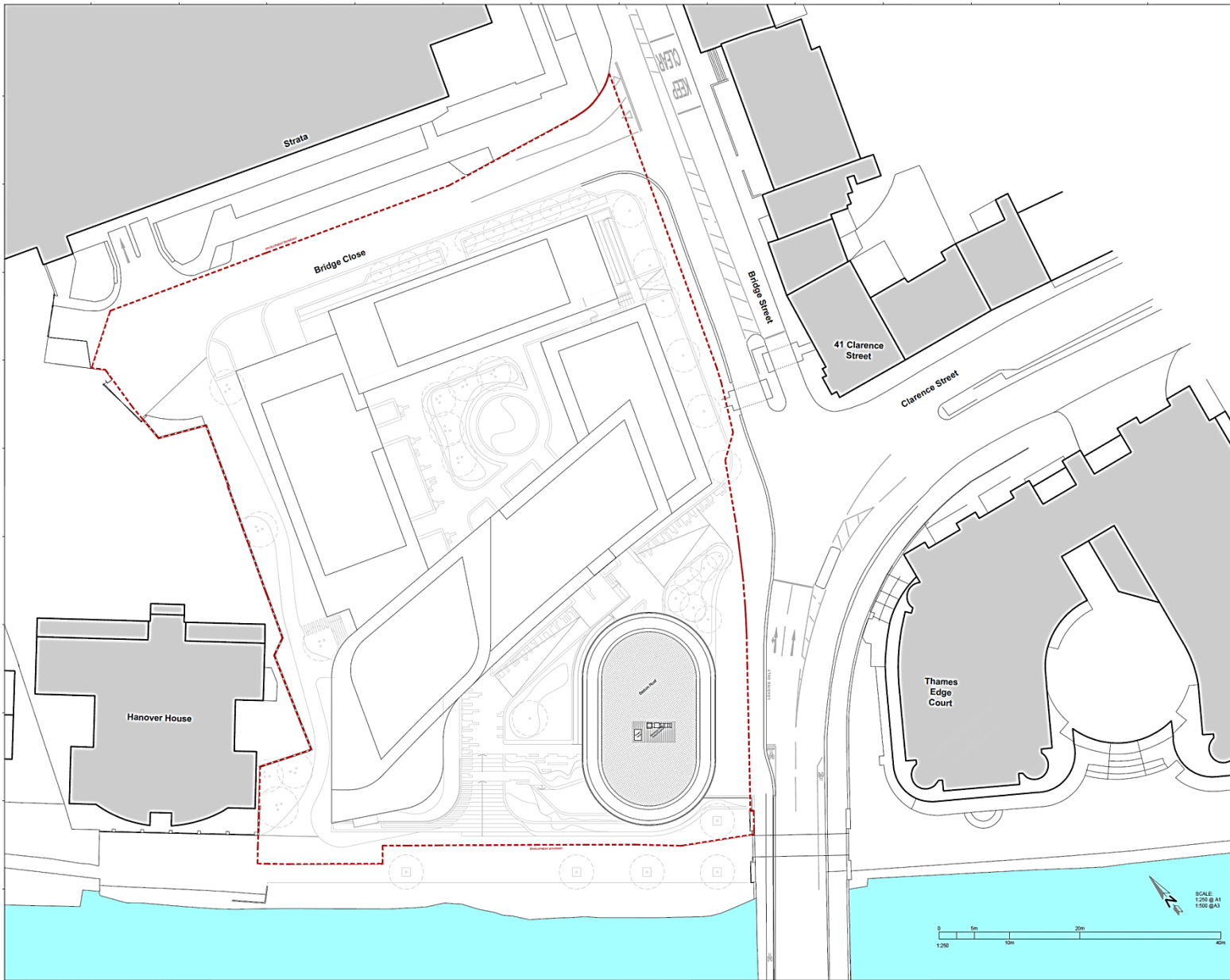
Project  
Bridge Street  
Staines-upon-Thames

Drawing Title  
Level 11  
General Arrangement

Drawn	Check	Scale	Alt. Ref.
CY	18.12.2015	1:250	

© Bennet Project No.	Drawing Number	Rev.
A10875	D 0111	P3

NOTES: 1. ALL WORK IS SUBJECT TO THE TERMS AND CONDITIONS OF THE STANDARD CONDITIONS OF CONTRACT FOR ARCHITECTS' SERVICES AS SET OUT IN THE RIBA CONTRACT FOR ARCHITECTS' SERVICES.



CLIENT  
 STRUCTURAL ENGINEER  
 SERVICES ENGINEER  
 CONSULTANT  
 KEY PLAN

NOTES:  
 THIS DRAWING IS PROTECTED BY COPYRIGHT.

P3	20.02.16	Depth of piers to lower deepened by 250mm, windows to lower equalised to stack through all floors, depth of pavement beyond Bridge Street service to extended to face of building. In revised JMS, adjacent landscaped planter footings, and also trees moved to other Bridge Street locations to suit.	CY	REB
P3	08.02.16	EVP Coordination	CY	REB
P1	18.12.15	Issued for Planning	CY	REB
No.	Date	Comment	CY	Drawn / Check

Issue Status  
**PRELIMINARY**  
**tp bennett**  
 architecture  
 interiors  
 planning  
 One Abchurch Lane, London EC4N 3NE UK +44 (0) 20 7300 8000 www.tpbennett.com

Project  
 Bridge Street  
 Staines-upon-Thames

Drawing Title  
 Level 12 - Roof Plan  
 General Arrangement

Drawn	Date	Scale @ A1	At. Ref.
CY	10.12.2015	1:250	--
tp bennett Project No.	Drawing Number	Rev.	
A10875	D 0112	P3	

© 2015 TPB. ALL RIGHTS RESERVED. THIS DRAWING IS THE PROPERTY OF TPB AND IS NOT TO BE REPRODUCED OR TRANSMITTED IN ANY FORM OR BY ANY MEANS, ELECTRONIC OR MECHANICAL, WITHOUT THE WRITTEN PERMISSION OF TPB.







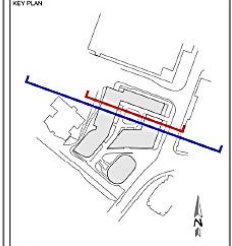


1 Proposed Topographic Section - West to East  
1/20



2 Proposed Section - West to East  
1/20

CLIENT  
 STRUCTURAL ENGINEER  
 SERVICES ENGINEER  
 CONSULTANT



NOTES:  
 THIS DRAWING IS PROTECTED BY COPYRIGHT.

P1 16.12.15 Issued for Planning MW REE  
 Rev Date Content (Open) Date

tp bennett  
 architecture  
 interiors  
 planning  
 One America Street London W6J 9AF UK +44 (0) 20 30 7338 2000 www.tpennett.com

Project  
 Bridge Street  
 Staines-upon-Thames

Drawing Title  
 Proposed Sectional Elevation  
 West to East

Drawn	CHK	Scale	AC	REV.
16/11/2015	16/11/2015	A1	1/400000	

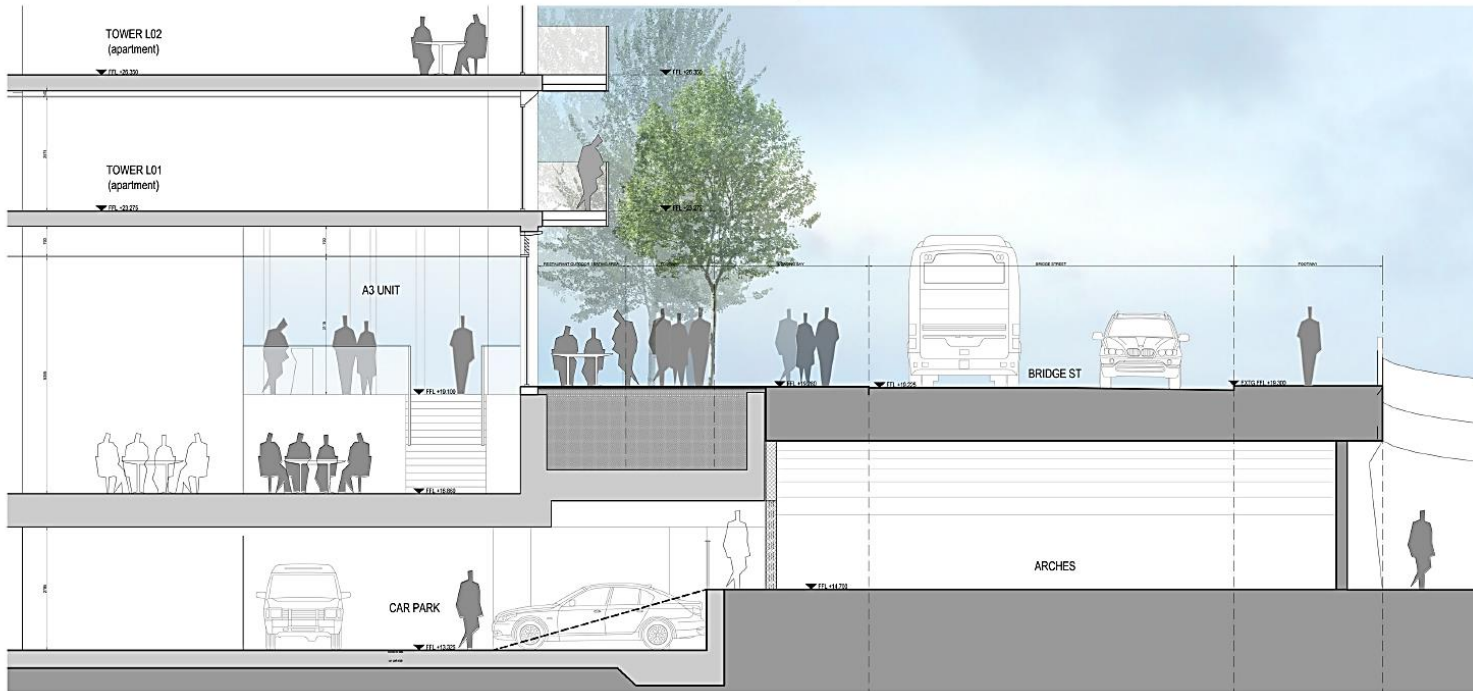
© Bennet P/04/15 Drawing Number  
 A10875 D 0300 P1

ALL RIGHTS RESERVED. NO PART OF THIS DRAWING OR THE INFORMATION CONTAINED HEREIN IS TO BE REPRODUCED OR TRANSMITTED IN ANY FORM OR BY ANY MEANS, ELECTRONIC OR MECHANICAL, INCLUDING PHOTOCOPYING, RECORDING, OR BY ANY INFORMATION STORAGE AND RETRIEVAL SYSTEM.



1 Topographic Elevation - South  
1/20

2



2 Fringe Condition Section - Bridge Close  
1/20

CLIENT

STRUCTURAL ENGINEER

SERVICES ENGINEER

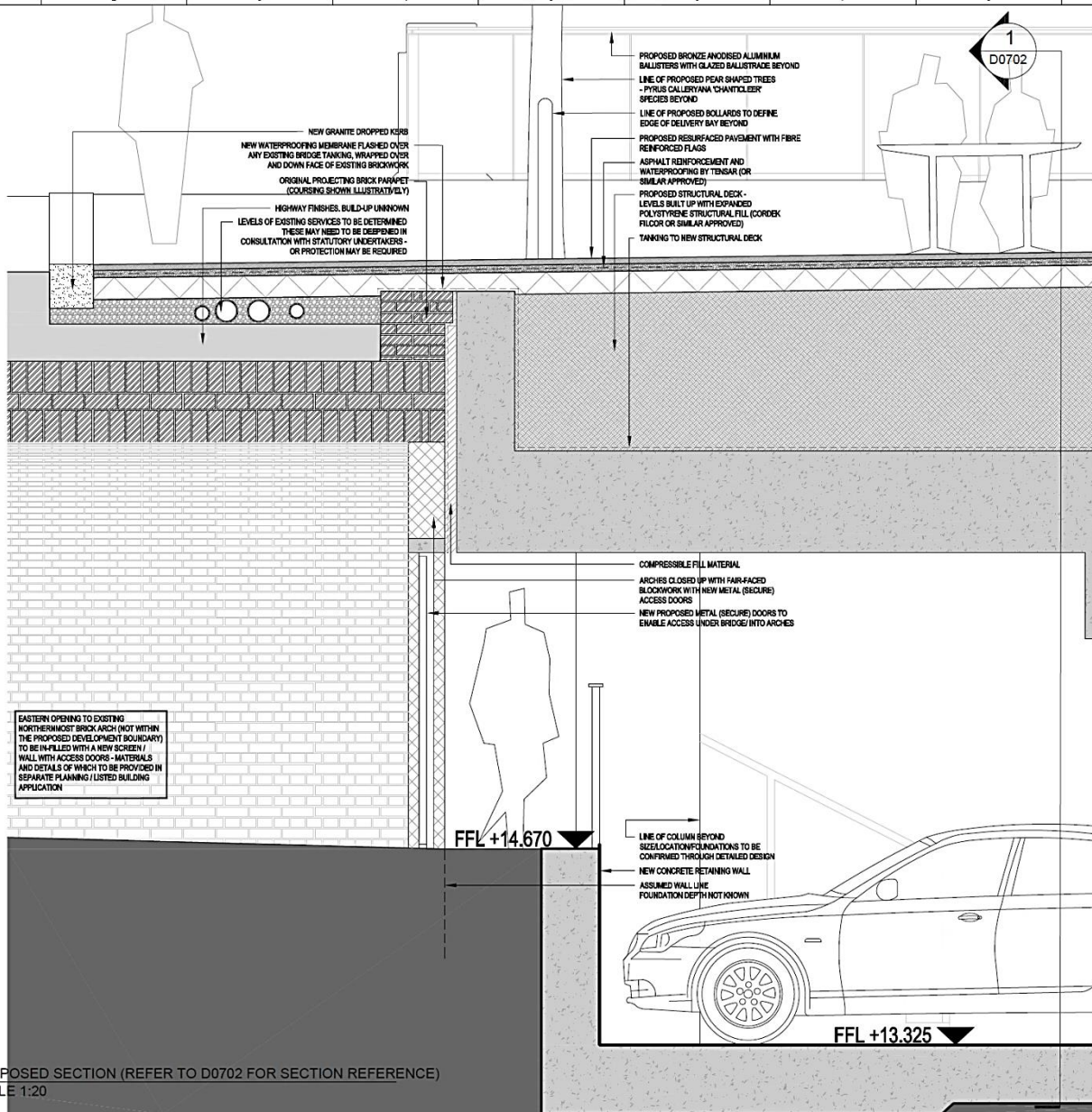
CONSULTANT

KEY PLAN

NOTES:  
THIS DRAWING IS PROTECTED BY COPYRIGHT.

S1: 16.12.15, Issued For Planning		MW	SB
No.	Date	Drawn	Checked
Revision		Issue Status	
<b>PRELIMINARY</b>			
<b>tp bennett</b>			
architecture interiors planning			
One America House, London SE1 0NE, UK +44 (0) 20 7328 2000 www.tpbennett.com			
Project Bridge Street Staines-upon-Thames			
Drawing Title Fringe Condition: Section Bridge Street			
Drawn	Date	Scale @ A1	As Issued
MW	16.12.15	1/20	-
Drawing Number		Page	
A10875		P1	

ARCHITECTS & INTERIORS ARCHITECTS PARTNERSHIP WITH SERVICES ENGINEERS LIMITED 2015  
NOT TO BE USED OUTSIDE



EASTERN OPENING TO EXISTING NORTHERNMOST BRICK ARCH (NOT WITHIN THE PROPOSED DEVELOPMENT BOUNDARY) TO BE INFILLED WITH A NEW SCREEN / WALL WITH ACCESS DOORS - MATERIALS AND DETAILS OF WHICH TO BE PROVIDED IN SEPARATE PLANNING / LISTED BUILDING APPLICATION

01 PROPOSED SECTION (REFER TO D0702 FOR SECTION REFERENCE)  
SCALE 1:20

CLIENT
STRUCTURAL ENGINEER
SERVICES ENGINEER
CONSULTANT
KEY PLAN

NOTES:  
 OUTLINE PROPOSALS, SUBJECT TO DETAILED SITE INVESTIGATIONS AND DETAILED DESIGN.  
 DO NOT SCALE. FIGURED DIMENSIONS ONLY TO BE TAKEN FROM THIS DRAWING. CHECK DIMENSIONS ON SITE AND REPORT DISCREPANCIES TO THE ARCHITECT.  
 THIS DRAWING IS PROTECTED BY COPYRIGHT.  
 ALL AREAS HAVE BEEN MEASURED FROM CURRENT DRAWINGS. THEY MAY VARY BECAUSE OF (E.G) SURVEY, DESIGN DEVELOPMENT, CONSTRUCTION TOLERANCES, STATUTORY REQUIREMENTS OR RE-DEFINITION OF THE AREAS TO BE MEASURED.

P2	27.01.16	NOTE REGARDING EASTERN OPENING OF NORTHERNMOST BRICK ARCH ADDED	CY	REB
P1	21.01.16	PRELIMINARY ISSUE	AA	REB
No.	Date	Comment	Drawn	Checked
Revisions				

Issue Status  
**PRELIMINARY**

**tp bennett**  
 architecture  
 interiors  
 planning

One America Street London E8E 0NE UK +44 (0) 20 7208 2000 www.tpbennt.com

Project  
**BRIDGE STREET  
 STAINES-UPON-THAMES**

Drawing Title  
**PROPOSED STAINES BRIDGE  
 SECTION**

Drawn	Date	Scale @ A2	Alt. Ref.
AA	19.01.2016	1:20	-
tp bennett Project No.	Drawing Number	Rev	
A10875	D 0703	P2	